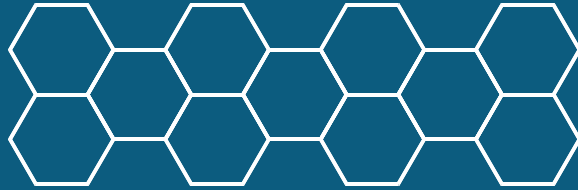




Mobility

INFIT[®] Lightstair



Ready to install, lightweight and
cost-optimized staircase system



Overview

Our new and innovative 3A Composites Mobility solution **-INFIT® Lightstair-** provides a light and cost-optimized stair system designed for ease of installation in any kind of double- or single-deck train.

The weight reduction is achieved through the intelligent integration of core materials and the combination of carbon and fiberglass elements in a sandwich construction.

Compared to conventional welded metal stairways, our system is multifunctional and easier to install due to its ready-to-install delivery.

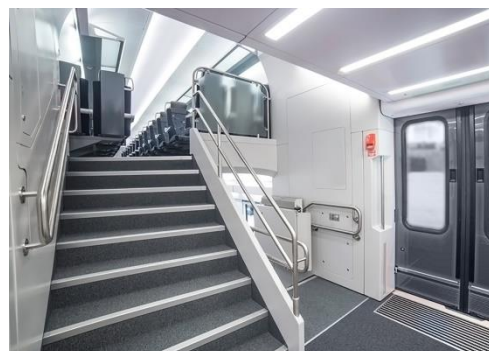
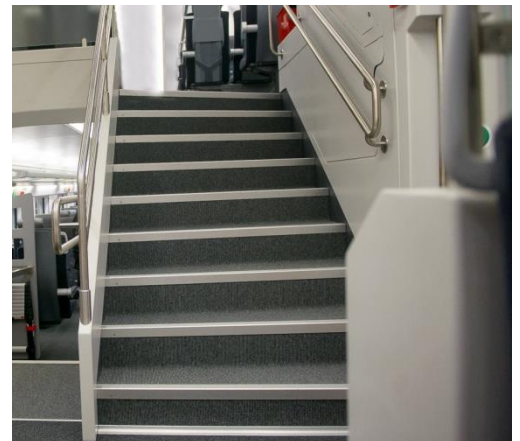
The thermal and acoustic insulation can be customized, thus function integration, structure and cover are combined in only one process.

This new sandwich staircase system provides reliable and exceptional performance over a product life of at least 30 years.

Thanks to the tool-based production in one step the associated tolerances are minimal, Therefore, installations can be carried out quickly and accurately without adjustment work.

Our solution is the better alternative when it comes to stairway systems for new vehicles or the overhaul of existing rolling stock.

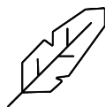
Our applications



-INFIT® Lightstair- provides a light and cost-optimized stair system designed for ease of installation in any kind of double-deck train.



Function overview



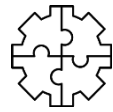
Lightweight construction



Cost saving



Time saving



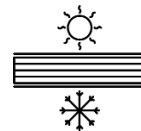
Easy installation



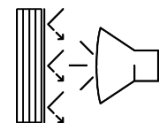
Fire protection



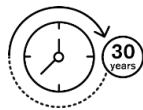
Water resistant



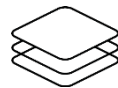
Thermal insulation (λ)



Acoustic insulation



Long lifetime



Sandwich technology



Tolerance



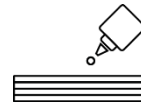
Easy repair



Available with flooring



Welding free



Easy gluing



Recyclable



Phenolic resin free



Customization



TSI LOC&PAS
TSI PRM
EN 12663 / GMRT 2100



REACH regulation
UNIFE
EN 45545 / DIN 6701



Mobility

3A Composites Mobility AG
Park Altenrhein
CH-9423 Altenrhein
Switzerland
+41 71 858 48 48

3A Composites Mobility S.A.
Inwestorów 6
39-300 Mielec
Poland
+48 17 773 78 00

www.3acompositescmobility.com